

# SECTIONAL DOORS

RESIDENCIAL



[WWW.FLEXIDOOR.PT](http://WWW.FLEXIDOOR.PT)

 **Flexidoor**  
AUTOMATIC DOORS MANUFACTURER

## THICKNESS



### Technical Specifications

- Heat transfer coefficient:
  - Panel 610 mm with seal:  $U = 0.76 \text{ W/m}^2\text{K}$
  - Panel 500 mm with seal:  $U = 0.80 \text{ W/m}^2\text{K}$
  - Panel 610 / 500 mm without seal:  $U = 0.53 \text{ W/m}^2\text{K}$
- Closed cell content:  $\pm 94\%$
- All panels are lined internally and externally with a protective PVC film
- Density:  $\pm 45 \text{ kg/m}^3$
- Adhesive strength:  $\pm 0.10 \text{ MPa}$
- Compressive strength:  $\pm 0.13 \text{ MPa}$
- Compressive Modulus of Elasticity:  $\pm 2.68 \text{ MPa}$
- Thermal conductivity:  $\pm 0.14 \text{ W/mk}$

## FINISHING

GROOVE, FRAME, WHITE FLAT  
MICRO RIB:  
OTHER AVAILABLE RAL COLOURS



WOOD  
(Wood imitation)



LIGHT



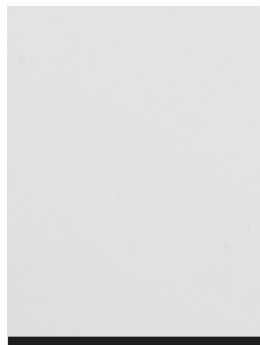
DARK



GROOVE



FRAME



WHITE FLAT



MICRO RIB



SILVER CROSS



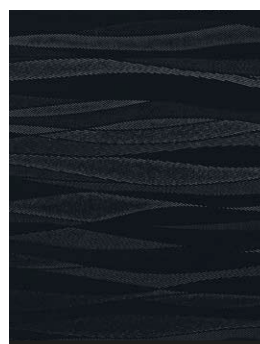
GROOVE WOOD



FRAME WOOD



WOOD FLAT

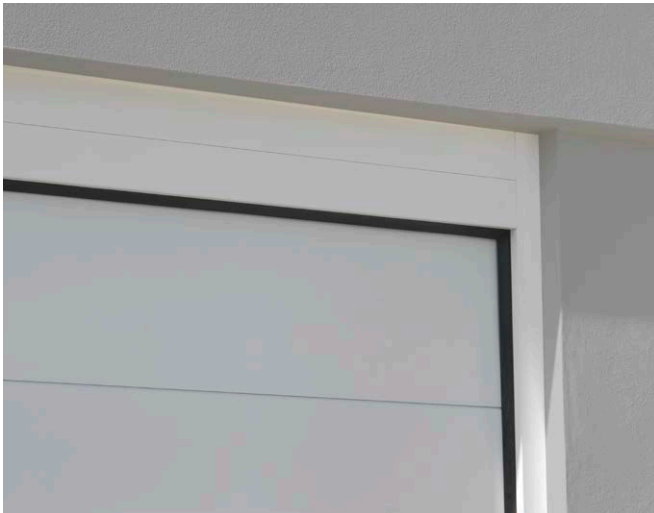


DARK DESIGN



DARK CROSS

# COMPOSITION OF THE DOOR



## FLEXIDOOR PRESENTS THE ALUFRAME SYSTEM

The new Aluminium Frame ensures durability and an exceptional exterior aesthetic finishing. It was designed to fix the spring system and the top rubber seal to the headroom. All associated with an exceptional level of robustness.

The system has multiple fitting options, either with or without any side wall or headroom. Minimum headroom of 130mm and side wall of 90mm. Multiple add-ons of 50mm.

## FLEXIDOOR ON THE LEAD OF CONSTRUCTION

Designed thinking on the installation process and in the improvement of the appearance, Flexidoor presents its New CLIP System.

The clip wall console allows headroom "built-in" with springs in front of 130mm, and makes the installation of the spring system much easier especially with only one installer.



01 • The headroom rubber seal improves the tightness and the aesthetics of the door.



02 • The new design improves the action of the rollers and increases the robustness of the track.



03 • The new connection brackets eases assembly and the adjustment of the tracks.



04 • Rear connection profile

# WINDOWS



## PVC and Stainless steel Frames



Round window black PVC Frame  
Diameter: 330 mm



Round window Stainless steel Frame  
Diameter: 240 mm or 330 mm



Square window Stainless steel Frame  
Width: 310 mm • Height: 310 mm

**NOTE:**  
AVAILABLE IN GLASS AND ACRYLIC: plain, frosted and granulated.  
In the window with acrylic, the effects only exist in RAL colour 9010. In the window with glass, the effects are available in RAL colours 1015, 6005, 8014, 9010 and bright wood effect.

## PVC FRAMES



Plain Acrylic



Plain Acrylic with Cross effect



Plain Acrylic with Rhombus effect

## Aluminium Frames



Double Laminated Plain Glass



Double Laminated Plain Glass with Cross effect



Double Laminated Plain Glass with Rhombus effect

## PVC Sun effect



**SUN EFFECT WITH 5 ACRYLIC WINDOWS OR 3 ACRYLIC WINDOWS**

Width: 530 mm • Height: 365 mm

Dimensions common for all windows.



## MOTOR FOR SECTIONAL AND UP-AND-OVER DOORS

LIKE IT is the latest innovation in home automation, with a range of solutions where high technology reigns. With different options in terms of power, the PRO delivers the performance of a motor

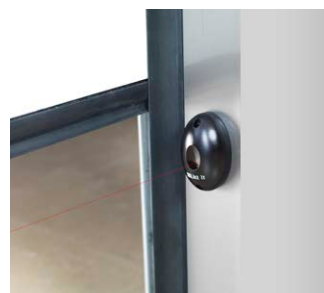
specially developed for the residential market, with easy programming functions, quality of conception and the elegance of a top designer.



**DIG**



**FAST**



**WISE**

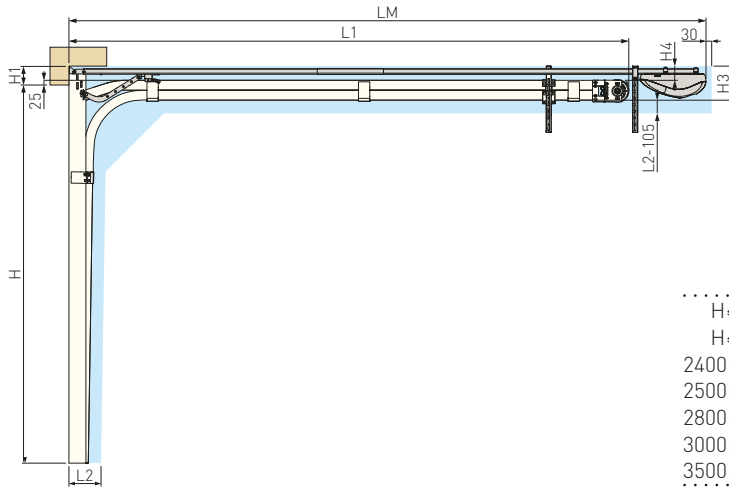


**REX 2**

		<b>PRO60</b>	<b>PRO80</b>	<b>PRO120</b>
Maximum door surface	m <sup>2</sup>	8 m <sup>2</sup>	12 m <sup>2</sup>	16 m <sup>2</sup>
Speed	IP	0,15 m/s	0,15 m/s	0,15 m/s

# HEADROOMS

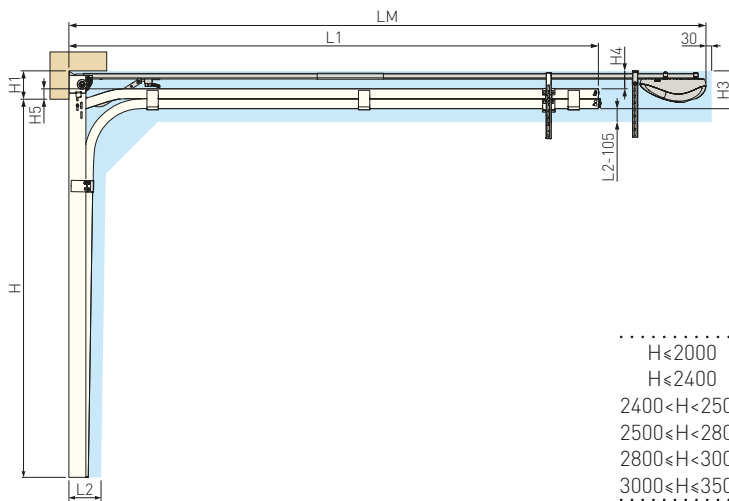
## REAR SPRINGS



	L1	LM	H	H <sub>MAX</sub>	Maximum height: 3680
H ≤ 2000	2555	3370	H <sub>MIN</sub>		Min. headroom: 100
H ≤ 2400	2955	3370	<b>H1</b>		<b>100 ≤ H1 &lt; 130</b>
2400 < H < 2500	H+555	3370	H3		H1 + 85
2500 < H < 2800	H+555	4370	H4		H1 - 25
2800 < H < 3000	H+755	4370			
3000 < H < 3500	H+800	4370			
3500 < H < 3680	H+800	-			

Dimensions em mm

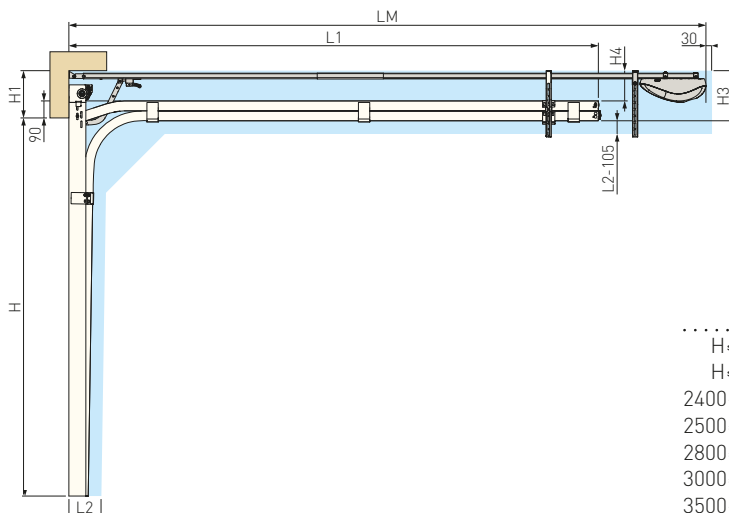
## REDUCED LIFT



	L1	LM	H	H <sub>MAX</sub>	Maximum height: 3200
H ≤ 2000	2394	3370	H <sub>MIN</sub>		Min. headroom: 130
H ≤ 2400	2794	3370	<b>H1</b>		<b>130 ≤ H1 &lt; 150</b> <b>150 ≤ H1 &lt; 200</b>
2400 < H < 2500	H+394	3370	H3		H1+55    H1+65
2500 < H < 2800	H+394	4370	H4		H1-55    H1-65
2800 < H < 3000	H+594	4370	H5		55    65
3000 < H < 3500	H+634	4370			

Dimensions em mm

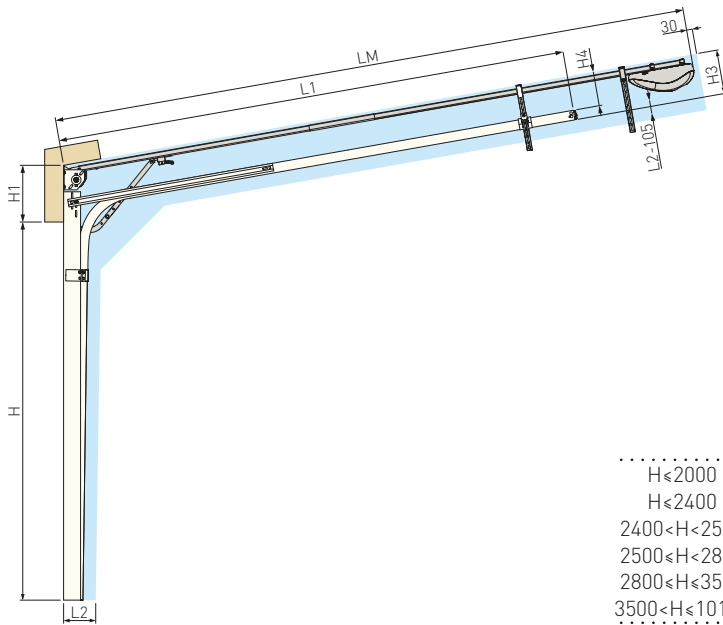
## LOW LIFT



	L1	LM	H	H <sub>MAX</sub>	Maximum height: 3680
H ≤ 2000	2396	3370	H <sub>MIN</sub>		Min. headroom: 200
H ≤ 2400	2796	3370	<b>H1</b>		<b>200 ≤ H1 &lt; 300</b>
2400 < H < 2500	H+396	3370	H3		H1 + 20
2500 < H < 2800	H+396	4370	H4		H1 - 90
2800 < H < 3000	H+596	4370			
3000 < H < 3500	H+636	4370			
3500 < H < 5570	H+636	-			

Dimensions em mm

## NORMAL LIFT WITH INCLINATION

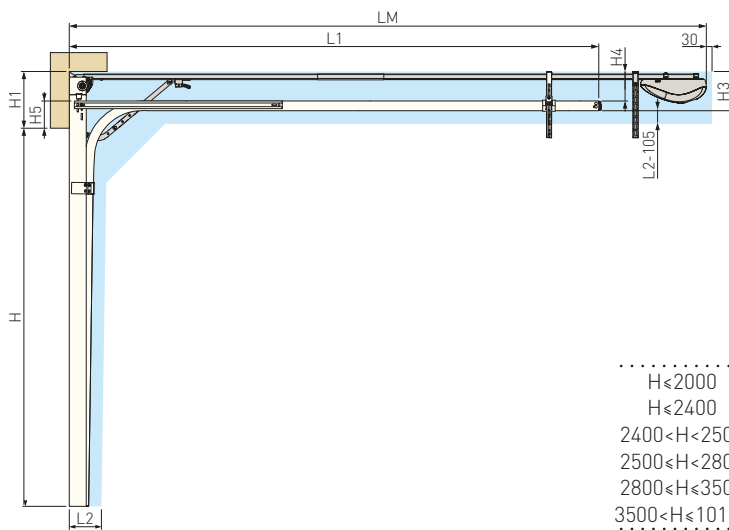


	L1	LM
H ≤ 2000	2396	3370
H ≤ 2400	2796	3370
2400 < H < 2500	H+396	3370
2500 ≤ H < 2800	H+396	4370
2800 ≤ H < 3500	H+596	4370
3500 < H ≤ 10175	H+596	-

H	Maximum height: 3680	
H1	Min. headroom: 300	
H1	<b>300 ≤ H1 &lt; 420</b>	<b>H1 &gt; 420</b>
H3	H1-90	H1-215
H4	H1-145	H1-270

Dimensions em mm

## NORMAL LIFT

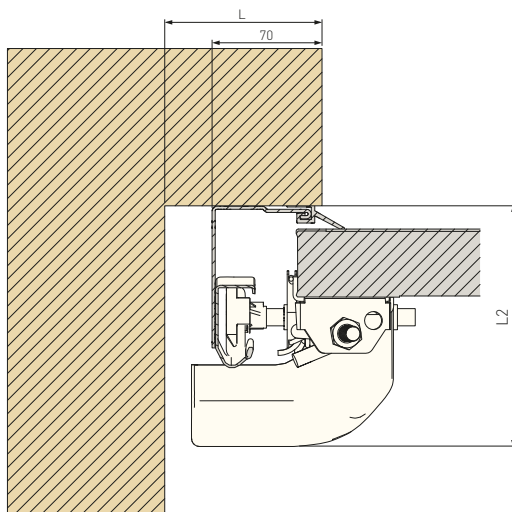


	L1	LM
H ≤ 2000	2396	3370
H ≤ 2400	2796	3370
2400 < H < 2500	H+396	3370
2500 ≤ H < 2800	H+396	4370
2800 ≤ H < 3500	H+596	4370
3500 < H ≤ 10175	H+596	-

H	Maximum height: 3680	
H1	Min. headroom: 300	
H1	<b>300 ≤ H1 &lt; 420</b>	<b>H1 &gt; 420</b>
H3	H1-90	H1-215
H4	H1-145	H1-270
H5	145	270

Dimensions em mm

## HORIZONTAL VIEW



	A < 7m <sup>2</sup>	A < 16m <sup>2</sup>	A > 16m <sup>2</sup>
L	100	120	100
L2	135	160	200



RUA DA MAJOEIRA, Nº 400  
APARTADO 542  
2415 - 184 REGUEIRA DE PONTES  
LEIRIA • PORTUGAL

TEL. +351 244 850 470

FAX. +351 244 850 471

INFO@FLEXIDOOR.PT

**WWW.FLEXIDOOR.PT**

BRORES.EN.10.19

DISTRIBUTOR

Cofinanciado por:

